



PRIMARY SCHOOL UNIFORM POLICY

All required school uniform articles are sold in the School Uniform Shop except for black shoes and sport shoes.

Each family enrolling in the school receives a copy of the uniform list, which details what is required for the school uniform. The enrolment form, which is signed by both parents, includes a condition which states that parents undertake to provide the child with the correct uniform approved by the school, and to ensure that the child is always sent to school neatly and modestly dressed in the required uniform. (Clause 4 of the conditions of enrolment). Should parents have any difficulties in meeting their requirements, the matter needs to be discussed with the class teacher or principal. A letter may be used in this regard. Full school uniform must be worn each day. We are proud of our uniform and trust you will do your part in maintaining a high standard.

HAIRSTYLE INFORMATION

- Boys and girls hairstyles should be *neat in appearance* and *natural in colour*. Mohawks, dreadlocks or pictures/patterns shaved into the hair are examples of unacceptable hairstyles.
- Students with hair longer than the shirt collar must have it tied back using *plain blue or black hair ties* such as: elastics, headbands, clasps or ribbons.
- The acceptability of any hairstyle is at the discretion of the Principal and students will be expected to adjust their hairstyle as directed.

SCHOOL HAT

The hat is part of the school uniform and it must be available to wear every school day. It is not to be shared with other students.

JEWELLERY

- Boys and girls are permitted to wear a plain wristwatch that complements the school uniform.
- Smart watches *capable of receiving and/or sending messages* are not permitted. E.g. Apple and Samsung watches, some Fitbits.
- Girls may wear small, plain studs or sleepers that are silver or gold. Studs may include a small blue or white stone. Large sleepers, studs with large gemstones or dangly earrings are not permitted.
- Boys may not wear any kind of earring in primary school.
- No other jewellery or accessories are allowed to be worn by boys or girls.

SPORT UNIFORM

Shorts: Royal blue sport shorts with ECCS logo

Polo shirts: Sky blue polo with ECCS logo

Faction shirt: Polo shirts with ECCS and faction logo

Shoes: Mainly white sport shoes

Socks: Sky blue ECCS socks



GIRLS' DRESSES

- The length of girls' summer dresses should be on the knee. Parents should check their daughters' uniforms and adjust/purchase new ones where necessary.
- The winter uniform is a pinafore dress for Years 1-4 students and a skirt (worn with an ECCS blouse) for Year 5-6 girls. The length of the pinafore and skirt should be on the knee.
- Girls trousers are an alternative to the skirt or pinafore.

SHOES

- The ECCS school socks must be worn with shoes.
- During winter, girls may wear navy blue tights *or* the ECCS sky blue socks.
- **Boys black shoes:** Traditional school shoes with black laces or Velcro straps. They must be *polishable* and have *a distinct heel*.
- **Girls black shoes:** Traditional, black school shoes (including Mary Jane style) with black laces or Velcro straps. They must be *polishable* and have *a distinct heel*.



Lace-ups



Lace-ups



Velcro straps



Mary Janes

- Hybrid black shoes, skate style shoes or black sneakers are not permitted. See examples below.



First 2 weeks of Term 2: transition from Summer to Winter uniform. By Week 3, full Winter uniform must be worn.

First 2 weeks of Term 4: transition from Winter to Summer uniform. By Week 3, full Summer uniform must be worn.



All items of uniform are to be clearly marked with the owners' name. (Laundry markers are available in the Uniform Shop).

Summer uniform will be worn in Terms 1 & 4, winter uniform in Terms 2 and 3.

Uniform is to be kept clean and in good condition.

Kindergarten and Pre-Primary: Sports Uniform only

Year 1 – Year 6

SUMMER – BOYS	SUMMER - GIRLS
Royal blue shorts	Blue check dress
Short sleeved sky blue school shirt	Black lace up shoes with mid blue ankle socks
Black lace up shoes with short grey socks with blue bands	Blue school hat
Blue school hat	

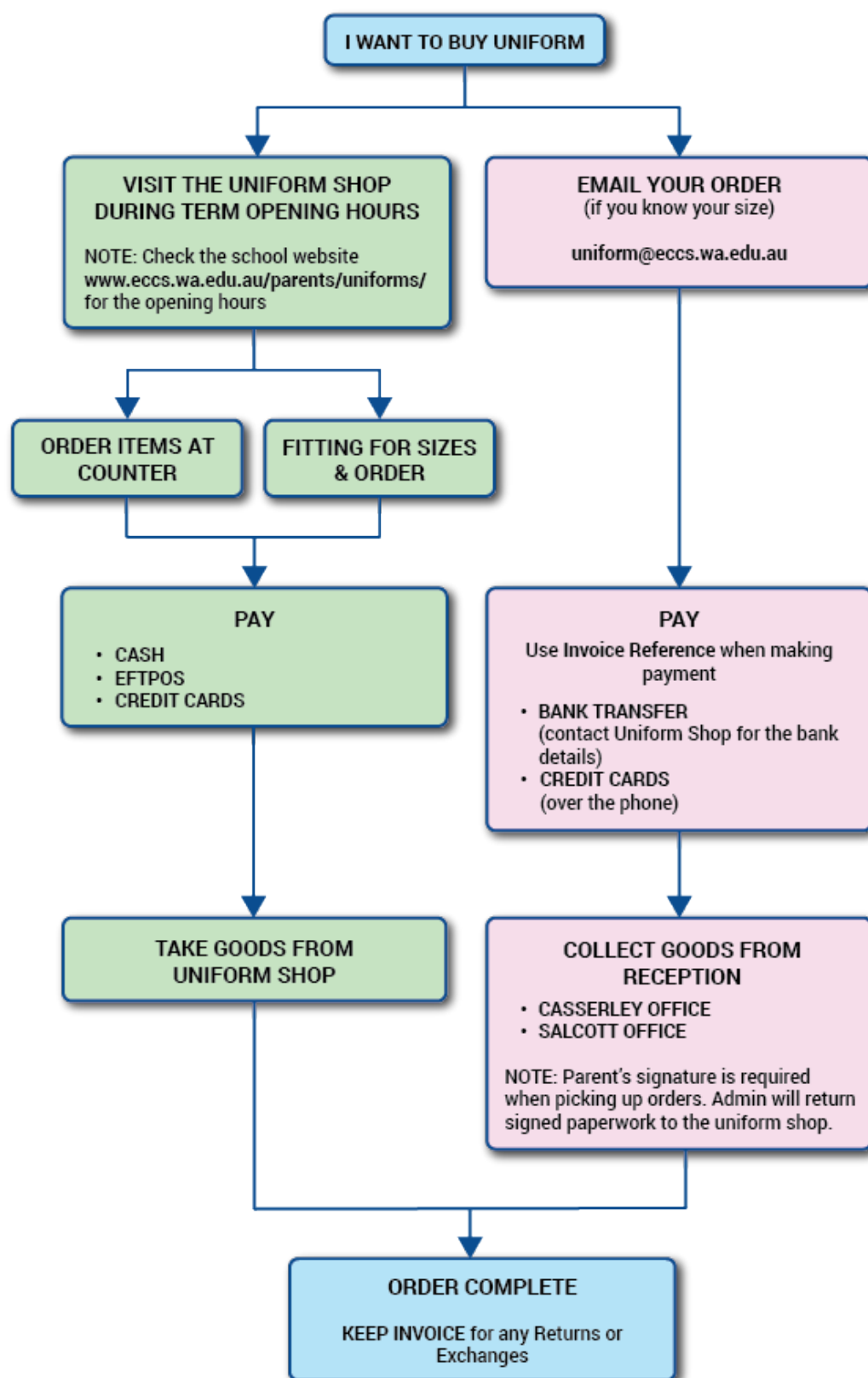
WINTER – BOYS	WINTER - GIRLS
Long grey trousers	Chequered Tunic/Pinafore
Sky blue long/short sleeve shirt	Sky blue long/short sleeve shirt with school crest
Royal blue jumper with sky blue trim	Royal blue jumper with sky blue trim
Black leather shoes with school short grey socks with blue bands	Black shoes with mid blue ankle socks or blue tights
Tie	Tie

SPORT – BOYS	SPORT – GIRLS
Sky blue polo shirt with crest. Faction colour shirt during term 3&4	Sky blue polo shirt with crest Faction colour shirt during term 3&4
Royal blue sport shorts with crest OR Royal blue track pant	Royal blue sport shorts with crest OR Royal blue track pant
Sky blue windcheater with crest	Sky blue windcheater with crest
White sport shoes with school blue socks	White sport shoes with blue ankle socks

OTHER UNIFORM ITEMS

School Library bag - Swimming bag - Chair bag - Apron - School Bag

For the uniform prices, please see website www.eccs.wa.edu.au/parents/uniforms





Uniform Items

Girls	Boys
 <p>Black lace up shoes with mid blue ankle socks</p>	 <p>Black lace up shoes with short grey socks with blue bands</p>
<p>Girl's winter uniform</p> 	<p>Boys winter uniform</p> 
<p>Summer Uniform</p>  <div> <p>Girl</p> <p>Boy</p> </div>	<p>Sport Uniform</p>  <div> <p>Summer</p> <p>Winter</p> </div>

